

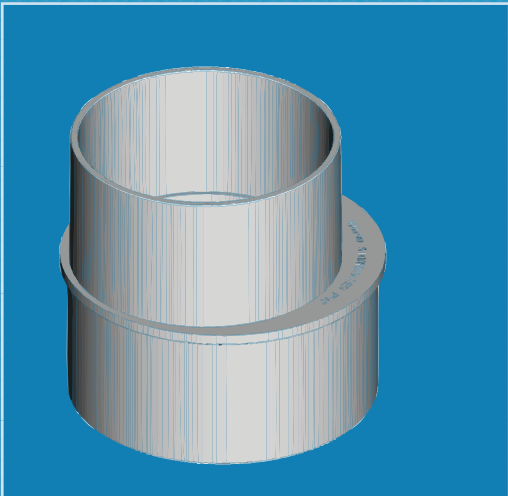
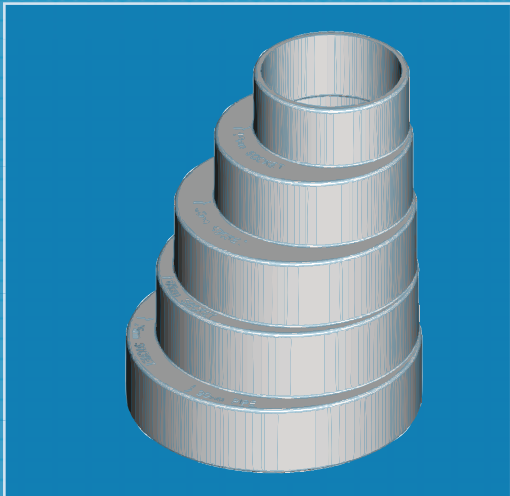
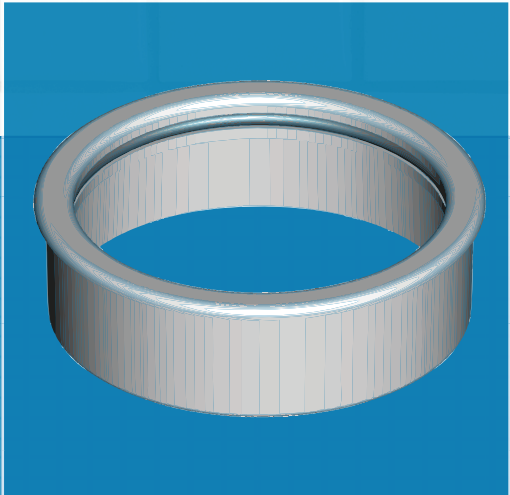
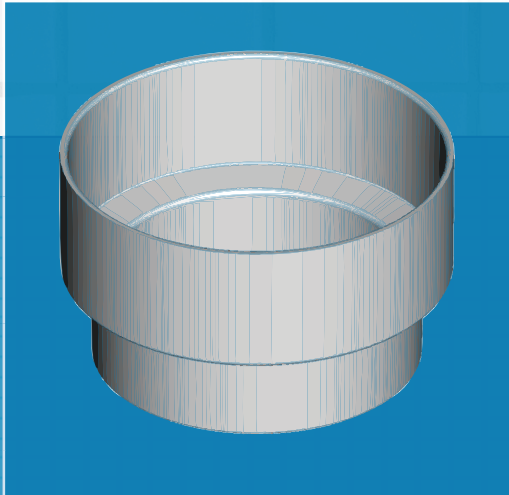
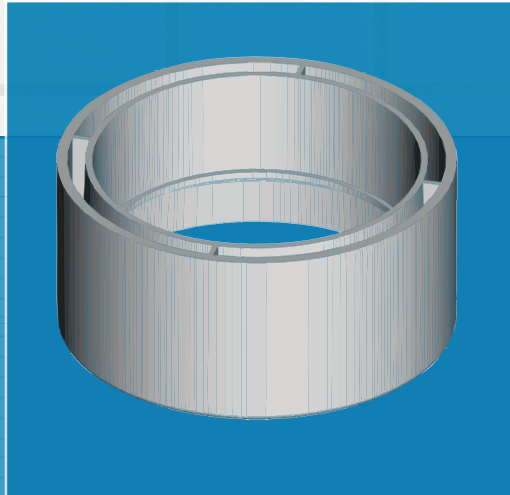
NOW
AVAILABLE



STORMWATER REDUCERS

Plastec offers a wide range of reducers for all your stormwater needs

Our varied range includes sockets, pipe and downpipe reducers, o-ring adaptors and multi reducers



WWW.PLASTEC.COM.AU

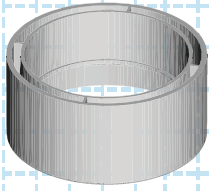
LIKE US ON FACEBOOK



STORMWATER REDUCERS RANGE

SOCKET REDUCER

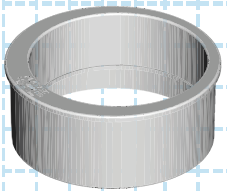
Reduces 100mm DWV socket (14880) or 150mm stormwater (17498) to suit 90mm (14880) or 100mm (17498) outlet diameter stormwater.



14880 - 90 x 100
17498 - 150 x 100

OFFSET PIPE REDUCER

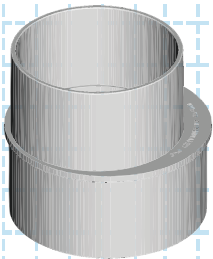
Reduces 100mm DWV pipe to suit 90mm outer diameter stormwater. Offset allows close to wall installation.



18167 - 100 x 90

DOWNPIPE 100 X 90 REDUCER

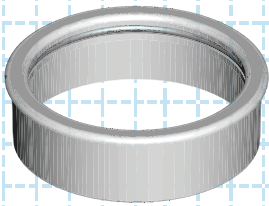
Inlet is 90mm socket and outlet is 100mm pipe size.



15124 - 100 x 90

O-RING ADAPTOR

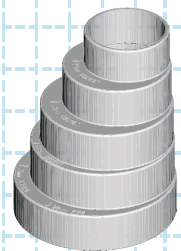
Reduces 100mm DWV pipe to suit 90mm outer diameter stormwater. O-ring allows for pipe expansion.



17260 - 100 x 90

MULTI ADAPTOR

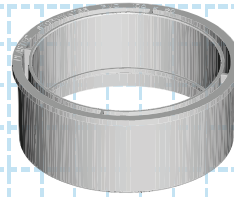
A multi sized adaptor which can reduce multiple diameter



15282 - 40 to 90
15575 - 40 to 100

PIPE REDUCER

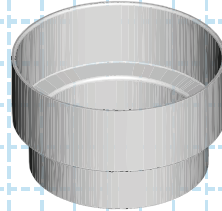
Reduces 100mm DWV pipe to suit 90mm outer diameter stormwater



14881 - 100 x 90

DOWNPIPE REDUCER

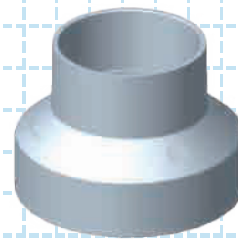
Inlet is 90mm socket stormwater and outlet is either 75mm or 80mm DWV.



15120 - 90 x 75
15624 - 90 x 80

STORMWATER REDUCER

Fitting is 90mm pipe size to 50mm socket size DWV.



19715 - 90 x 50

ALSO AVAILABLE IN PLASTEC'S STORMWATER RANGE:

- Bends
- Couplings & Repair Couplings
- Slab Repair Couplings
- Junctions
- End Caps
- Reducers
- Finishing Collars & Grates
- Frog Flaps
- Downpipe Adaptors & Drops
- Downpipe Rectangle Fittings
- Floor Flanges
- Flexible Pipe Fittings
- Leaf Guards & Catchers
- First Flush Diverters
- Tank Outlets

Specifications are correct as at 11/05/2020, but are subject to change at anytime without notice