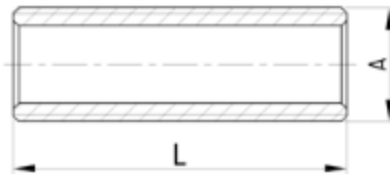


NIPPLE THREAD

Brand Name: **elson**



CODE	DESCRIPTION	L(mm)	A
81000	NIPPLE ALL THREAD 15mmx150mm BRASS	150	G1/2B
81002	NIPPLE ALL THREAD 15mmx300mm BRASS	300	G1/2B
81004	NIPPLE ALL THREAD 15mmx600mm BRASS	600	G1/2B
81006	NIPPLE ALL THREAD 20mmx150mm BRASS	150	G3/4B
81008	NIPPLE ALL THREAD 20mmx300mm BRASS	300	G3/4B
81010	NIPPLE ALL THREAD 25mmx150mm BRASS	150	G1B
81012	NIPPLE ALL THREAD 25mmx300mm BRASS	300	G1B
81014	NIPPLE ALL THREAD 32mmx150mm BRASS	150	G1 1/4B
81016	NIPPLE ALL THREAD 32mmx300mm BRASS	300	G1 1/4B
81018	NIPPLE ALL THREAD 40mmx150mm BRASS	150	G1 1/2B
81020	NIPPLE ALL THREAD 40mmx300mm BRASS	300	G1 1/2B
81022	NIPPLE ALL THREAD 50mmx150mm BRASS	150	G2B
81024	NIPPLE ALL THREAD 50mmx300mm BRASS	300	G2B
81083	NIPPLE ALL THREAD 6mm (1/4")x150mm BRASS	150	G1/4B
81085	NIPPLE ALL THREAD 6mm (1/4")x300mm BRASS	300	G1/4B
81087	NIPPLE ALL THREAD 10mmx150mm BRASS	150	G3/8B
81089	NIPPLE ALL THREAD 10mmx300mm BRASS	300	G3/8B

Product Specification & Features

- Maximum Working Temperature: 95°C
- Maximum Working Pressure at 20°C : Water-2000Kpa, Gas-500KPa
- Threads: Complies with AS ISO 7.1, AS ISO 7.2 and AS 1722.2
- Material: DR Brass, Complies with AS 2345
- Suitable for Potable Water – complies with AS/NZS 4020

Elson Australasia Pty Ltd

Tel: 02 9625 7899 Fax: 02 9625 7855

Website: www.elson.net.au E-mail: sales@elson.net.au



Version 1.0

Nov. 2020