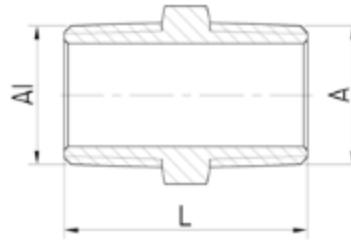
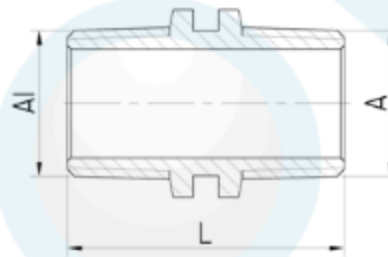


**NIPPLE D/HEX R THREAD SEAL**

Brand Name: **elson**



CODE	DESCRIPTION	L(mm)	A	A1
81239	NIPPLE HEX R1/2(15mmMI) BRS R THREAD SEAL	33.2	R1/2	R1/2
81246	NIPPLE HEX R3/4(20mmMI) BRS R THREAD SEAL	36.8	R3/4	R3/4
81248	NIPPLE HEX R3/4(20mmMI) CHROME R THREAD SEAL	36.8	R3/4	R3/4
81363	NIPPLE HEX R3/4xR1/2 BRS R THREAD SEAL	36.5	R1/2	R3/4



CODE	DESCRIPTION	L(mm)	A	A1
81247	NIPPLE D/HEX R1/2(15mmMI) BRS R THREAD SEAL	38.2	R1/2	R1/2
81253	NIPPLE D/HEX R3/4(20mmMI) BRS R THREAD SEAL	39.8	R3/4	R3/4
81369	NIPPLE D/HEX R3/4xR1/2 BRS R THREAD SEAL	39.5	R1/2	R3/4

**Product Specification & Features**

- Maximum Working Temperature: 95°C
- Maximum Working Pressure at 20°C : Water-2000Kpa, Gas-500KPa
- Threads: Complies with AS ISO 7.1, AS ISO 7.2
- Material: DR Brass, Complies with AS 2345
- Suitable for Potable Water – complies with AS/NZS 4020



**Elson Australasia Pty Ltd**

Tel: 02 9625 7899 Fax: 02 9625 7855

Website: www.elson.net.au E-mail: sales@elson.net.au

Version 1.0

Nov. 2020