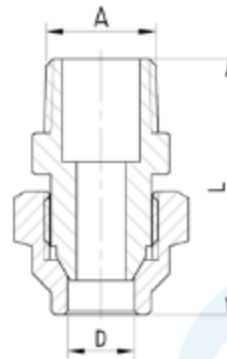


UNION C×M

Brand Name: **elson**



CODE	DESCRIPTION	L(mm)	D	A
85134	UNION C×M 10mm FL x10mm M BRS	37.3	DN10	R3/8
85136	UNION C×M 10mm FL x15mm M BRS	40.6	DN10	R1/2
85144	UNION C×M 15mm FL x10mm M BRS	39.1	DN15	R3/8
85145	UNION C×M 15mm FL x15mm M CP	42.7	DN15	R1/2
85146	UNION C×M 15mm FL x15mm M BRS	42.7	DN15	R1/2
85147	UNION C×M 20mm FL x20mm M CP	47.8	DN20	R3/4
85148	UNION C×M 20mm FL x20mm M BRS	47.8	DN20	R3/4
85149	UNION C×M 25mm FL x25mm M BRS	55.7	DN25	R1
85150	UNION C×M 15mm FL x20mm M BRS	45.3	DN15	R3/4
85151	UNION C×M 15mm FL x20mm M CP	45.3	DN15	R3/4
85152	UNION C×M 20mm FL x15mm M BRS	50.2	DN20	R1/2
85162	UNION C×M 32mm FL x32mm M BRS	68.5	DN32	R1 1/4
85172	UNION C×M 40mm FL x40mm M BRS	67.8	DN40	R1 1/2
85182	UNION C×M 50mm FL x50mm M BRS	74.1	DN50	R2

Product Specification & Features

- Maximum Working Temperature: 95°C
- Maximum Working Pressure at 20°C : Water-2000Kpa, Gas-500KPa
- Threads: Complies with AS ISO 7.1, AS ISO 7.2 and AS 1722.2
- Material: DR Brass, Complies with AS 2345
- Suitable for Potable Water – complies with AS/NZS 4020



Elson Australasia Pty Ltd

Tel: 02 9625 7899 Fax: 02 9625 7855

Website: www.elson.net.au E-mail: sales@elson.net.au

Version 1.0

Nov. 2020