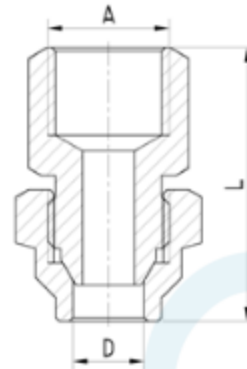


**UNION C×F**

Brand Name: **elson**



CODE	DESCRIPTION	L(mm)	D	A
85240	UNION Cx F 10mmFL x 10mmFI BRS	37.5	DN10	G3/8
85242	UNION Cx F 10mmFL x 15mmFI BRS	39.5	DN10	G1/2
85250	UNION Cx F 15mmFL x 10mmFI BRS	38.3	DN15	G3/8
85251	UNION Cx F 15mm FL x 15mm FI CP	40.8	DN15	G1/2
85252	UNION Cx F 15mm FL x 15mm FI BRS	40.8	DN15	G1/2
85253	UNION Cx F 20mm FL x 20mm FI CP	43.2	DN20	G3/4
85254	UNION Cx F 20mm FL x 20mm FI BRS	43.2	DN20	G3/4
85256	UNION Cx F 15mm FL x 20mm FI BRS	40.8	DN15	G3/4
85258	UNION Cx F 20mm FL x 15mm FI BRS	43.2	DN20	G1/2
85260	UNION Cx F 25mm FL x 25mm FI BRS	52.2	DN25	G1
85270	UNION Cx F 32mm FL x 32mm FI BRS	60.2	DN32	G1 1/4
85280	UNION Cx F 40mm FL x 40mm FI BRS	58.5	DN40	G1 1/2
85288	UNION Cx F 50mm FL x 50mm FI BRS	68.1	DN50	G2

**Product Specification & Features**

- Maximum Working Temperature: 95°C
- Maximum Working Pressure at 20°C : Water-2000Kpa, Gas-500KPa
- Threads: Complies with AS 1722.2
- Material: DR Brass, Complies with AS 2345
- Suitable for Potable Water – complies with AS/NZS 4020

Standards & Approvals



**WaterMark**  
WMKA02497  
Standard AS 3688  
SAI GLOBAL



**Australian Standard**  
Certificate No. SMK 02497  
Standard AS 3688

**Elson Australasia Pty Ltd**

Tel: 02 9625 7899 Fax: 02 9625 7855

Website: www.elson.net.au E-mail: sales@elson.net.au

Version 1.0

Nov. 2020