

Grooved Light Wall Pipe

Application:	For Industrial Plumbing and Fire Hydrant Piping Systems - provides water to landing valves, hose reels and hydrant risers. Typically located in stairwells or building cavities - suitable for mains or independent water supply.
Features:	Pipe is line marked with all approvals and mill identification every metre for fast visual inspection.
Material:	ASTM A135 - Standard specification for Electric Resistance Welded (ERW) Steel Pipe. Hot dip galvanised to AS/NZS 4792.
End Configurations:	Roll Grooved Ends are standard for stock lengths. A surcharge will apply to each additional cut or processed end.
Standards:	EX6116, AS4118.2.1, AS 2419.1 and AS 4118.2.1 UL Approved. Roll Grooving conforms to ANSI/AWWA C606-97.
Approvals:	ActivFire®, UL, contact Dixon™ for relevant approvals at time of purchase



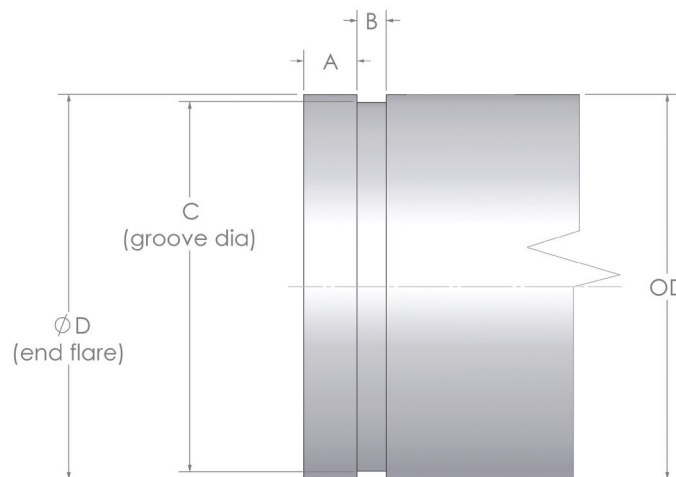
Galvanised Light Wall Pipe with Roll Grooved Ends (both ends).

Part No.	Length (mtr)	Size NB	OD (mm)	Wall Thickness (mm)	Working Pressure		Weight (kg)	No per bundle	Price \$ (ea)
					kPa	MPa			
PFHG-1143-25-RG	6	100	114.3	3.05	5500	5.5	51.5	10	315.86
PFHG-1651-30-RG	6	150	165.1	3.40	5500	5.5	83.2	7	504.85
PFHG-2191-48-RG	6	200	219.1	4.77	5500	5.5	153.8	5	1140.80

Price Group: FE

PI03

Roll Grooved Specification Table



NB		OD (mm)			A (mm)			B (mm)			C (mm)				D max
inch	mm	basic	min	max	basic	min	max	basic	min	max	diameter		circumference		
											min	max	min	max	
4	100	114.3	113.8	115.2	15.88	15.12	16.26	8.74	8.36	9.50	109.70	110.08	344.64	345.84	116.8
6*	150	165.1	164.3	166.7	15.88	15.12	16.26	8.74	8.36	9.50	160.22	160.78	503.35	505.11	167.6
8	200	219.1	218.5	220.4	19.05	18.29	19.43	11.91	11.53	12.67	213.89	214.40	671.97	673.56	223.5

* Australian Pipe Size

Note: Specifications and approvals subject to change without notice.



* The pipe or system working pressures are limited to the published working pressures of the couplings used in the design of the pipeline