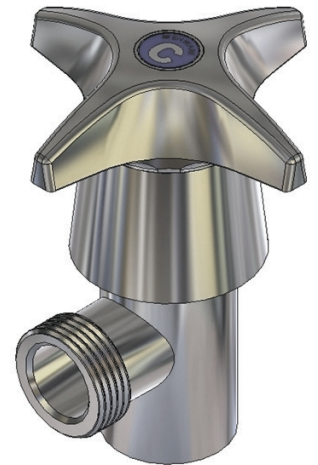


# Concealed Spindle Washing Machine Tap

Concealed spindle tapware series is robust and vandal resistant. The ergonomically designed handle features a dress skirt which conceals the anti-vandal handle fixing and spindle.

Ideal for commercial, institutional and public amenity applications.

## CS313



### FEATURES:

- High quality dezincification resistant (DR) brass construction
- Vandal-resistant internal locking ring secures the handle requires special key to release (key supplied)
- Serviceable with all wearing components replaceable, thus providing an even longer life
- Supplied complete with handles and indicators buttons
- Standard finish is heavy duty bright chrome, other finish options are satin chrome or powder coated

### OPTIONS:

Yellow (warm water) indicators

### Product Codes

<b>CS313</b>	Jumper Valve
<b>CSQ313</b>	1/4 turn Ceramic Disc
<b>CSH313</b>	1/2 turn Ceramic Disc



### Technical Information

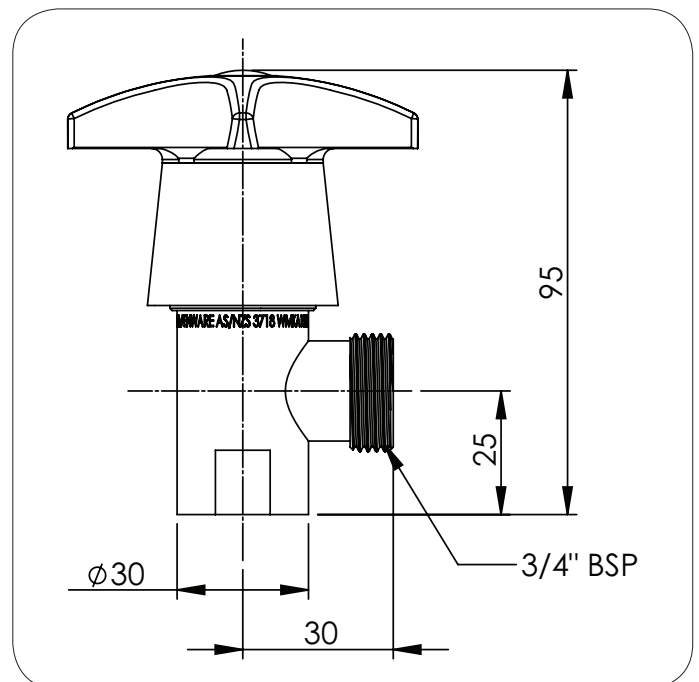
Working Pressure Range Ceramic Disc	50-800kPa 500kPa Max (PCA)*
Working Pressure Range Jumper Valve	30-1200kPa 500kPa Max (PCA)*
Maximum Working Temperature*	Ceramic Disc - 85°C Jumper Valve - 95°C

\*Enware products are to be installed in accordance with the Plumbing Code of Australia and AS/NZS3500.

Thermostatic mixing valves may be required. Reference should also be made to the Australasian Health facility Guidelines (AushFG), ABCB Regulations and Local Building Codes when considering the choice of, and the installation of these products.

NOTE: Enware Australia advises:

1. Due to ongoing Research and Development, specifications may change without notice.
2. Component specifications may change on some export models.
3. Refer to Warranty Statement for Warranty details [www.enware.com.au/warranty](http://www.enware.com.au/warranty)



Version: Dec 17

Call 1300 369 273  
[www.enware.com](http://www.enware.com)

Enware Australia Pty Limited  
9 Endeavour Rd Caringbah NSW 2229 Australia  
Ph: +61 2 8556 4000 Fax: +61 2 8556 4055

