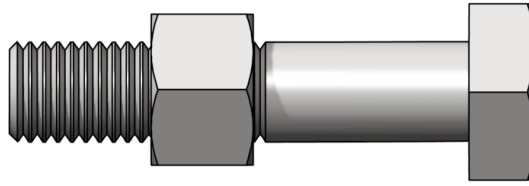


# HEX BOLTS AND NUTS



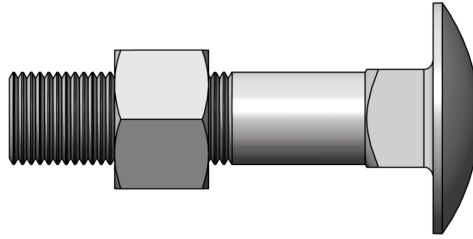
PART NO.	BOLT DIA.	LENGTH	BOX QTY
HBNM6x20	M6	25	200
HBNM6x25	M6	40	200
HBNM6x30	M6	50	200
HBNM6x40	M6	65	200
HBNM6x50	M6	50	200
HBNM8x20	M8	20	200
HBNM8x25	M8	25	200
HBNM8x30	M8	30	200
HBNM8x40	M8	40	200
HBNM8x50	M8	50	150
HBNM8x55	M8	55	150
HBNM8x60	M8	60	150
HBNM8x65	M8	65	150
HBNM8x75	M8	75	100
HBNM8x100	M8	100	100
HBNM10x16	M10	16	150
HBNM10x20	M10	20	150
HBNM10x25	M10	25	150
HBNM10x30	M10	30	150
HBNM10x35	M10	35	150
HBNM10x40	M10	40	150
HBNM10x45	M10	45	150
HBNM10x50	M10	50	75
HBNM10x55	M10	55	75
HBNM10x60	M10	60	75
HBNM10x65	M10	65	75
HBNM10x70	M10	70	75
HBNM10x75	M10	75	75
HBNM10x80	M10	80	75
HBNM10x100	M10	100	50
HBNM10x120	M10	120	50
HBNM10x140	M10	140	50
HBNM12x25	M12	25	250
HBNM12x30	M12	30	250
HBNM12x35	M12	35	200
HBNM12x40	M12	40	200
HBNM12x45	M12	45	175
HBNM12x50	M12	50	175
HBNM12x55	M12	55	150
HBNM12x60	M12	60	150
HBNM12x65	M12	65	150
HBNM12x75	M12	75	150
HBNM12x100	M12	100	100
HBNM12x120	M12	120	100

PART NO.	BOLT DIA.	LENGTH	BOX QTY
HBNM16x25	M16	25	125
HBNM16x30	M16	30	100
HBNM16x35	M16	35	100
HBNM16x40	M16	40	100
HBNM16x45	M16	45	100
HBNM16x50	M16	50	100
HBNM16x55	M16	55	75
HBNM16x60	M16	60	75
HBNM16x65	M16	65	75
HBNM16x70	M16	70	75
HBNM16x75	M16	75	75
HBNM16x80	M16	80	75
HBNM16x85	M16	85	75
HBNM16x90	M16	90	75
HBNM16x100	M16	100	50
HBNM16x110	M16	110	50
HBNM16x120	M16	120	50
HBNM16x130	M16	130	50
HBNM16x140	M16	140	40
HBNM16x150	M16	150	40
HBNM20x35	M20	35	50
HBNM20x40	M20	40	50
HBNM20x45	M20	45	50
HBNM20x50	M20	50	50
HBNM20x55	M20	55	50
HBNM20x60	M20	60	50
HBNM20x65	M20	65	50
HBNM20x70	M20	70	50
HBNM20x75	M20	75	50
HBNM20x80	M20	80	50
HBNM20x85	M20	85	30
HBNM20x90	M20	90	30
HBNM20x100	M20	100	30
HBNM20x110	M20	110	30
HBNM20x120	M20	120	30
HBNM20x130	M20	130	30
HBNM20x140	M20	140	25
HBNM20x150	M20	150	25
HBNM20x170	M20	170	25
HBNM24x60	M24	60	25
HBNM24x65	M24	65	25
HBNM24x70	M24	70	25
HBNM24x80	M24	80	25
HBNM24x85	M24	85	25
HBNM24x90	M24	90	25
HBNM24x100	M24	100	25

**FINISH: ZINC, GALVANISED OR STAINLESS**



# CUP HEAD BOLTS AND NUTS



PART NO.	BOLT DIA.	LENGTH	BOX QTY
CBNM6x25	M6	25	200
CBNM6x40	M6	40	200
CBNM6x50	M6	50	200
CBNM6x65	M6	65	150
CBNM6x75	M6	74	150
CBNM6x90	M6	90	150
CBNM6x100	M6	100	150
CBNM8x20	M8	20	200
CBNM8x25	M8	25	200
CBNM8x30	M8	30	200
CBNM8x40	M8	40	200
CBNM8x50	M8	50	150
CBNM8x65	M8	65	150
CBNM8x75	M8	75	100
CBNM8x90	M8	90	100
CBNM8x120	M8	120	100
CBNM8x130	M8	130	100
CBNM8x140	M8	140	100
CBNM8x150	M8	150	100
CBNM10x20	M10	20	200
CBNM10x25	M10	25	200
CBNM10x30	M10	30	200
CBNM10x40	M10	40	150
CBNM10x50	M10	50	100
CBNM10x65	M10	65	100
CBNM10x75	M10	75	100
CBNM10x90	M10	90	50
CBNM10x120	M10	120	50
CBNM10x130	M10	130	50
CBNM10x140	M10	140	50
CBNM10x150	M10	150	50
CBNM10x170	M10	170	100
CBNM10x180	M10	180	100
CBNM10x200	M10	200	100

PART NO.	BOLT DIA.	LENGTH	BOX QTY
CBNM12x45	M12	25	150
CBNM12x50	M12	40	150
CBNM12x65	M12	65	150
CBNM12x75	M12	74	150
CBNM12x90	M12	90	100
CBNM12x100	M12	100	100
CBNM12x120	M12	120	100
CBNM12x130	M12	130	75
CBNM12x140	M12	140	75
CBNM12x150	M12	150	75
CBNM12x170	M12	170	75
CBNM12x180	M12	180	75
CBNM12x200	M12	200	75
CBNM12x260	M12	260	50
CBNM12x300	M12	300	50

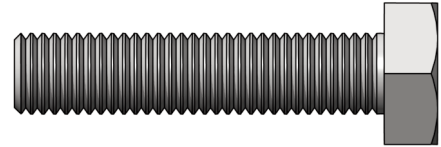
**FINISH: ZINC, GALVANISED OR STAINLESS**



# SET SCREWS AND NUTS

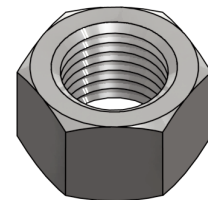
## SET SCREWS

PART NO.	SIZE	BOX QTY
HHSSM6X20	M6X20	100
HHSSM6X25	M6X25	100
HHSSM6X35	M6X30	100
HHSSM6X40	M6X40	100
HHSSM6X50	M6X50	100
HHSSM8X20	M8X20	100
HHSSM8X25	M8X25	100
HHSSM8X35	M8X30	100
HHSSM8X40	M8X40	100
HHSSM8X50	M8X50	100
HHSSM10X20	M10X20	100
HHSSM10X25	M10X25	100
HHSSM10X30	M10X30	100
HHSSM10X40	M10X40	100
HHSSM10X50	M10X50	100
HHSSM12X20	M12X20	100
HHSSM12X25	M12X25	100
HHSSM12X35	M12X30	100
HHSSM12X40	M12X40	100
HHSSM12X50	M12X50	100
HHSSM16X20	M16X20	100
HHSSM16X25	M16X25	100
HHSSM16X35	M16X30	100
HHSSM16X40	M16X40	100
HHSSM16X50	M16X50	100



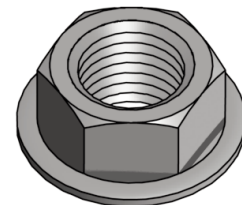
## HEX NUTS

PART NO.	SIZE	BOX QTY
HEXNUT-M06	M06	200
HEXNUT-M08	M08	200
HEXNUT-M10	M10	200
HEXNUT-M12	M12	200



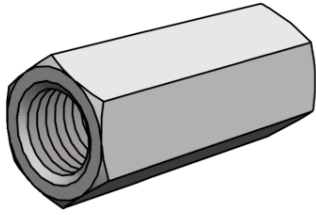
## WIZZ NUTS

PART NO.	SIZE	BOX QTY
WIZZ-M06	M06	200
WIZZ-M08	M08	200
WIZZ-M10	M10	200
WIZZ-M12	M12	200

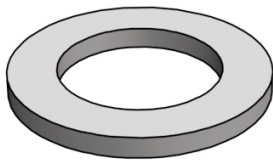


**FINISH: ZINC, GALVANISED OR STAINLESS**

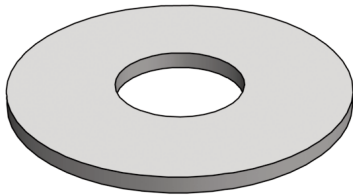
# COUPLERS WASHERS



ROD COUPLERS		
PART NO.	SIZE	BOX QTY
RC - M06	M06	200
RC - M08	M08	200
RC - M10	M10	100
RC - M12	M12	50
RC - M16	M16	50
RC - M20	M20	50
RC - M23	M24	25



WASHERS		
FLAT WASHERS		
PART NO.	SIZE	BOX QTY
FW-M6	M6	200
FW-M8	M8	200
FW-M10	M10	200
FW-M12	M12	200



MUDGUARD WASHERS		
PART NO.	SIZE	BOX QTY
MW-M6	M6	200
MW-M8	M8	200
MW-M10	M10	200
MW-M12	M12	200



SPRING WASHERS		
PART NO.	SIZE	BOX QTY
SW-M6	M6	200
SW-M8	M8	200
SW-M10	M10	200
SW-M12	M10	200

**FINISH: ZINC**

**GALVANISED AND STAINLESS STEEL FINISHES AVAILABLE ON REQUEST**

