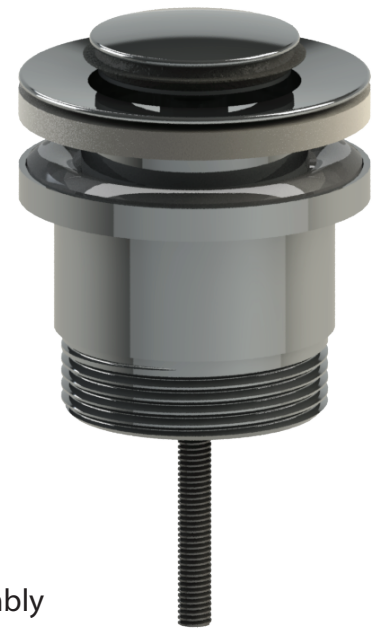
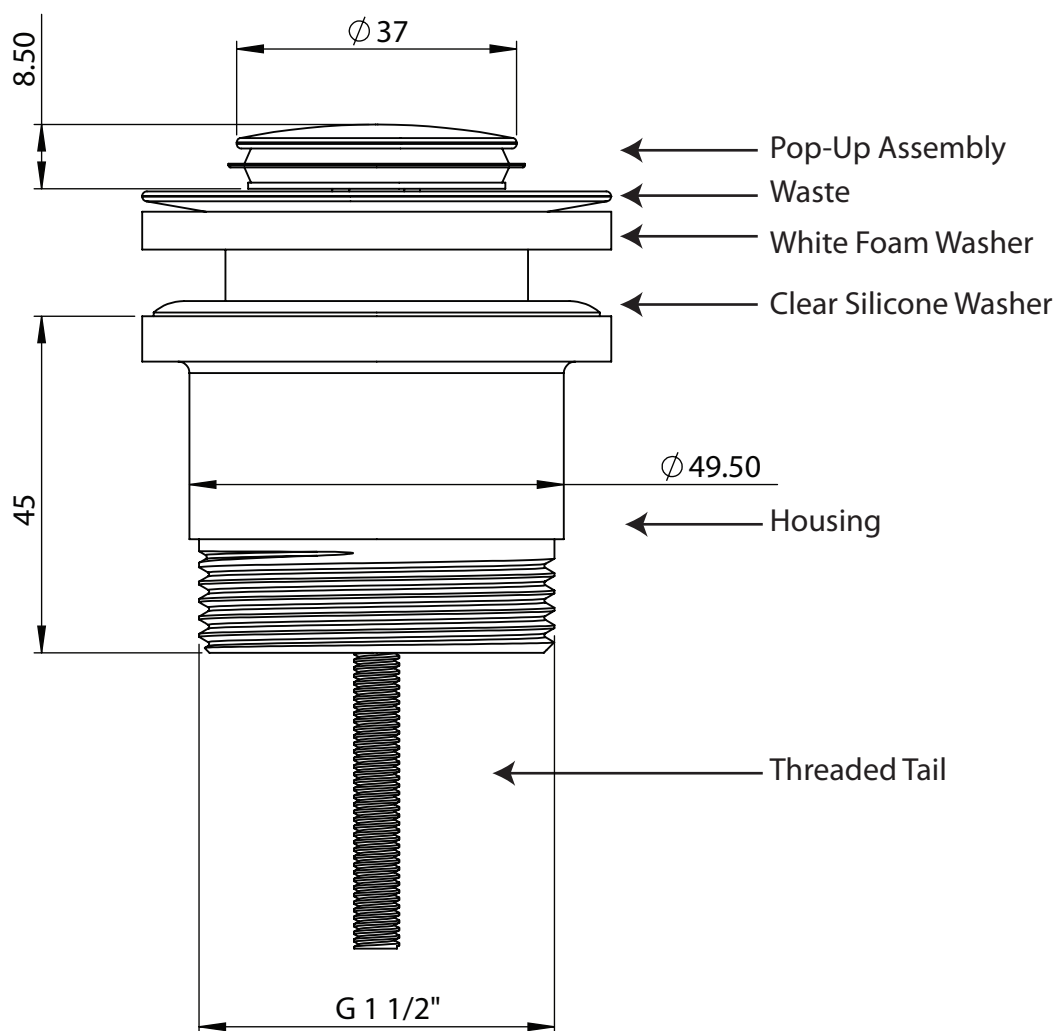


This Pop-Up Waste is suitable for both standard and over-flow basins



1. Disassemble Pop-Up Waste by unscrewing the Housing from the Threaded Tail.
2. Waste, Pop-Up Assembly and White Foam Washer are fitted on the upper side of the Basin.
3. Housing and Clear Silicone Washer fit underneath the Basin.
4. Re-tighten the assembly as shown above and attach to trap.
5. Check for leaks.