

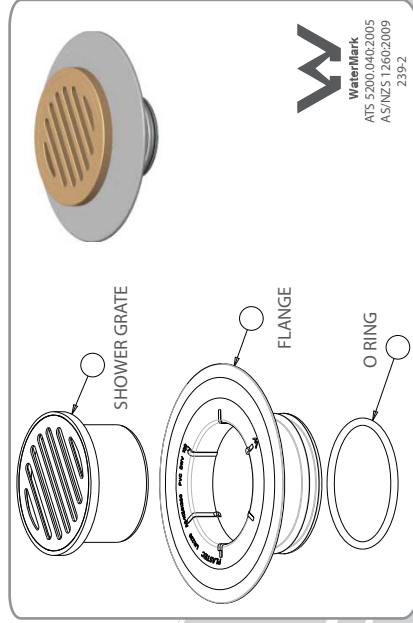
MAXI WASTE SWIVEL SYSTEM - RUBBER RING JOINT (RRJ) BRASS SLOTTED GRATE - ROUND

Our Maxi Waste Swivel Systems provide a unique, hassle free method of leak control. This product will ensure that your grate sits level by supporting the floor waste through various degrees of vertical and pivot movement.

Our systems have been designed with an ultra-slim outer perimeter flange which promotes adhesion to the waterproof membrane.

FEATURES

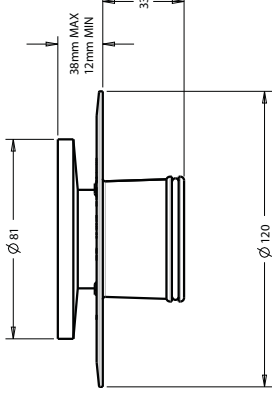
- Ability to adjust vertical height of grate eliminates need for cutting.
- Pivot movement of up to 5 degrees.
- Slim line grate inlet accommodates situations where no tile bed is required or can be extended to fit tile beds of up to 40mm.
- The Maxi Waste Swivel System is also available with a brass square slotted grate, a plastic grate or as a solvent weld outlet.



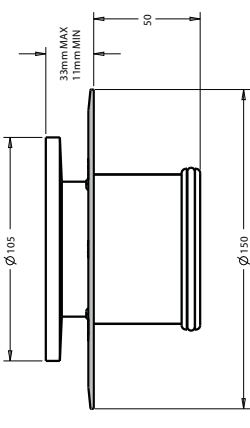
ID	Ø mm	FINISH	HEIGHT mm
12150	80 x 50	CHROME	60
12152	80 x 80	CHROME	30
12136	100 x 50	CHROME	40
12138	100 x 80	CHROME	30
12154	100 x 100	CHROME	25

NOTE: (a) Minimum grate height 6mm from floor level.
(b) Maximum grate height 40mm from floor level.
(c) Swivel Top movement of 5 degrees.

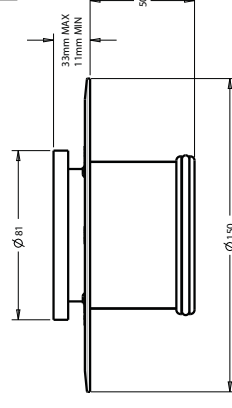
12150 - 80MM X 50MM



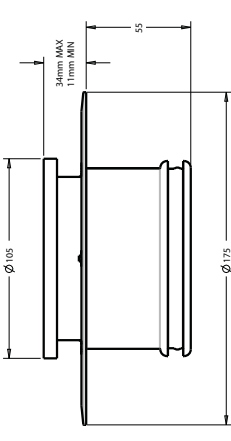
12138 - 100MM X 80MM



12152 - 80MM X 80MM



12154 - 100MM X 100MM



12136 - 100MM X 50MM

