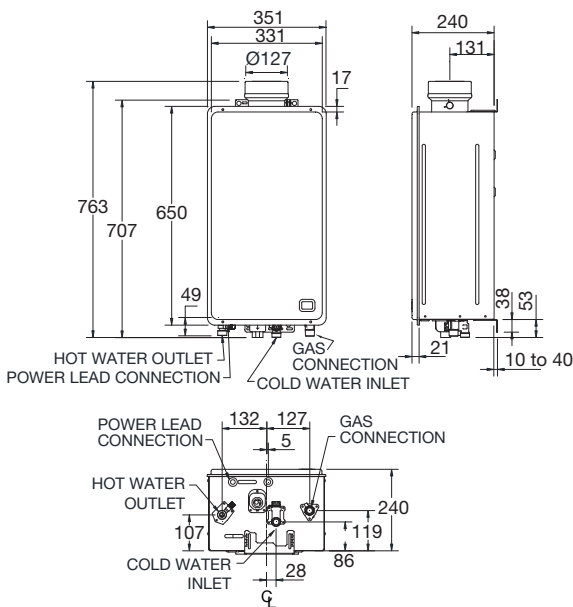




## Features & Benefits

- 27 L/min continuous hot water delivery @ 25°C rise
- Remote Temperature Controller options for added convenience and safety
- Rheem co-axial flue system
- 50°C models available (866627) requiring no tempering valve<sup>3</sup>
- Digital display for easy fault diagnosis
- Natural gas model
- 10 year heat exchanger warranty<sup>1</sup>



MODEL	866627 864627
Min. Operating Flow rate (L/min)	2.0
Nom. Gas Consumption (MJ/hr)	205
Max Water Supply Pressure (kPa)	1000
Min Water Supply Pressure (kPa)	140
Water Connections	R 3/4
Gas Connections	R 3/4
Approx. Weight (Empty) kg	24



Scan code for details & installation instructions

