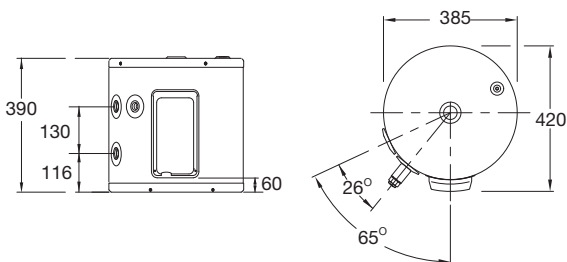


Features & Benefits

- The smallest Rheem electric water heater
- Small diameter - 385mm
- Fast, easy like-for-like replacement
- Plug & lead indoor models 2.4kW only
- 7 year cylinder warranty¹



MODEL	111025 111025/P
Hot Water Delivery (L)	21
kW Rating	2.4, 3.6
Relief Valve Pressure (kPa)	1400
Expansion Control Valve (kPa)	1200
Max Water Supply Pressure:	
with ECV (kPa)	960
without ECV (kPa)	1120
Water Connections	Rp ³ / ₄
Approx. Weight (packaged) kg	17



Scan code for
details & installation
instructions

