



- GST® is a VP305-1 DVGW safety device. It blocks the gas flow automatically when the flow rate through the device exceeds its minimum trip threshold (in the event of tampering, accidentally disconnecting the system, e.g. in a fire or if the pipes burst).
- When in the closed position, the mechanism allows a small leak through the reset hole. When the break has been repaired, the hole balances the pressure in the two chambers upstream and downstream, resetting it automatically.
- Available as a single fitting or, thanks to its compactness, as a device built into the valves.
- Does not require maintenance.
- Take care when choosing the GST and its nominal flow rate to ensure that it works correctly and does not close accidentally.



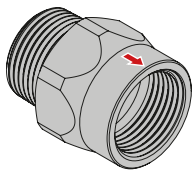
| Material | |
|------------------|-----------------------|
| Body | Internal cartridge |
| Zink plated Body | Aluminium and Polymer |

TECHNICAL SPECIFICATIONS

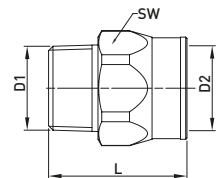
| Reference standards | Pressure | Temperature | Pressure drop | fs min. | fs.max. | Overflow value VL | Heat resistance | Application |
|---|-------------|---------------|-----------------------|---------|---------|----------------------------|--|--|
| DVGW VP305-1:12/2007 DVGW TRGI 2008 DVGW TRF 2012 | 15-100 mbar | -20 °C +60 °C | ≤ 0.5 mbar [50 Pa] | 1.30 | 1.45 | 37.5 l/h at 100 mbar (gas) | External: 925 °C for 60' / Internal: trip at 120 °C / 200 °C for 10' | For all types of gas as specified in EN 437 and DVGW G260/1 (Methane, Butane, Propane) |

VERSIONS AND CODES

GST® fitting – male/female threaded version

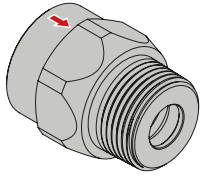


fs 1.30-1.45

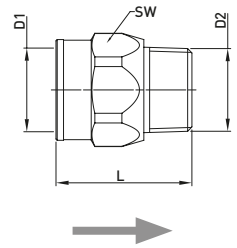


| Code | DN | GST® GS m³/h | D1 | D2 | L1 | SW | Pack |
|------------|----|------------------------|--------|---------|----|----|------|
| GS01110100 | 15 | V _{GAS} =1.6 | R1/2" | Rp1/2" | 52 | 27 | 20 |
| GS01210100 | 15 | V _{GAS} =2.5 | R1/2" | Rp1/2" | 52 | 27 | 20 |
| GS02210200 | 20 | V _{GAS} =2.5 | R3/4" | Rp3/4" | 52 | 32 | 15 |
| GS02310200 | 20 | V _{GAS} =4.0 | R3/4" | Rp3/4" | 54 | 41 | 15 |
| GS03210300 | 25 | V _{GAS} =2.5 | R1" | Rp1" | 54 | 41 | 10 |
| GS03310300 | 25 | V _{GAS} =4.0 | R1" | Rp1" | 54 | 41 | 10 |
| GS03410300 | 25 | V _{GAS} =6.0 | R1" | Rp1" | 54 | 41 | 10 |
| GS04510400 | 32 | V _{GAS} =10.0 | R1"1/4 | Rp1"1/4 | 67 | 50 | 6 |
| GS05610500 | 40 | V _{GAS} =16.0 | R1"1/2 | Rp1"1/2 | 76 | 60 | 6 |
| GS06610600 | 50 | V _{GAS} =16.0 | R2" | Rp2" | 80 | 70 | 6 |

GST® fitting – female/male threaded version



fs 1.30-1.45



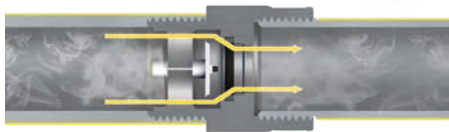
| Code | DN | GST® GS m³/h | D1 | D2 | L1 | SW | Pack |
|------------|----|------------------------|---------|--------|----|----|------|
| GS01120100 | 15 | V _{GAS} =1.6 | Rp1/2" | R1/2" | 52 | 27 | 20 |
| GS01220100 | 15 | V _{GAS} =2.5 | Rp1/2" | R1/2" | 52 | 27 | 20 |
| GS02220200 | 20 | V _{GAS} =2.5 | Rp3/4" | R3/4" | 52 | 32 | 15 |
| GS02320200 | 20 | V _{GAS} =4.0 | Rp3/4" | R3/4" | 54 | 41 | 15 |
| GS03220300 | 25 | V _{GAS} =2.5 | Rp1" | R1" | 54 | 41 | 10 |
| GS03320300 | 25 | V _{GAS} =4.0 | Rp1" | R1" | 54 | 41 | 10 |
| GS03420300 | 25 | V _{GAS} =6.0 | Rp1" | R1" | 54 | 41 | 10 |
| GS04520400 | 32 | V _{GAS} =10.0 | Rp1"1/4 | R1"1/4 | 67 | 50 | 6 |
| GS05620500 | 40 | V _{GAS} =16.0 | Rp1"1/2 | R1"1/2 | 76 | 60 | 6 |
| GS06620600 | 50 | V _{GAS} =16.0 | Rp2" | R2" | 80 | 70 | 6 |

OPERATION AND TECHNOLOGIES

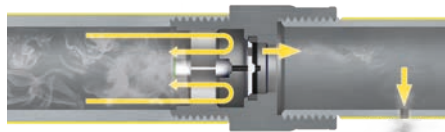
When inserted in the system, the GST® remains inactive (FIG.1) until the closure flow rate is reached (Vs).

As soon as the flow rate reaches the closure valve (Vs) for any accidental reason, the GST® closes instantly (FIG.2).

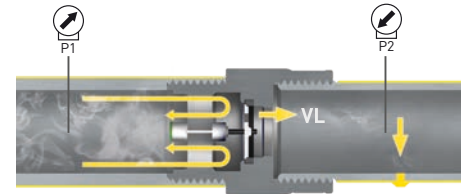
It is reset automatically by the bypass orifice on the cut-off, and the overflow VL that this creates balances the pressure upstream and downstream from the device when the conditions that caused the GST® to close have been removed (FIG.3).



GST® open (fig.1)



GST® closed (fig.2)



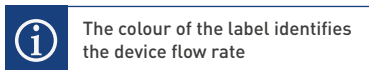
Automatic reset (fig.3)

| Legend | V _{GAS} | Nominal gas flow rate of GST® (d=0,64) |
|--------|------------------|--|
| | fs | Closure factor (fs=Vs / V _{GAS}) fs min. = 1.30 fs max. = 1.45 |
| | Vs | Gas closure flow rate (d=0,64) Vs = V _{GAS} x fs |
| | VL | Flow rate through the bypass orifice ≤ 37.5 l/h at 100 mbar (gas) |

GST IDENTIFICATION MARKING

In accordance with the standards, the GST® is supplied with a label that describes its technical specifications (DVGW VP 305-1).

- Device nominal flow rate (coloured identification)
- Pressure range "15 mbar - 100 mbar"
- Gas flow direction (arrow)
- Nominal diameter
- Type of GST® (M/K)
- "DVGW" marking
- Installation position



The colour of the label identifies the device flow rate



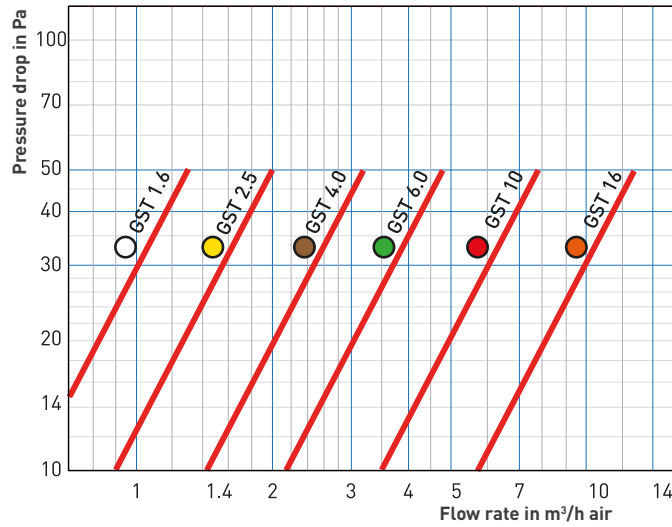
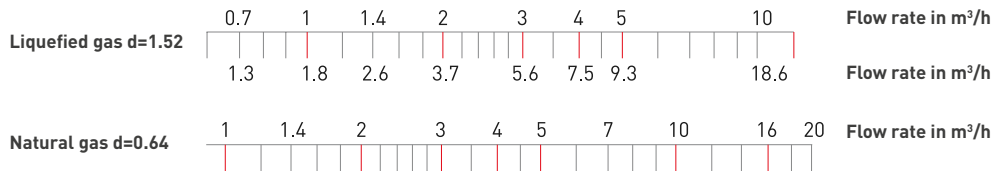
| GST® GS m³/h | |
|------------------------|--------|
| V _{GAS} =1.6 | |
| V _{GAS} =2.5 | Yellow |
| V _{GAS} =4.0 | Brown |
| V _{GAS} =6.0 | Green |
| V _{GAS} =10.0 | Red |
| V _{GAS} =16.0 | Orange |

T: 1800 225 572 | F: 1800 289 723 | E: sales@systemcontrol.com.au | W: systemcontrol.com.au

In support of our policy of continuous product improvement we reserve the right to change materials and specifications without notice. Drawings, where used, are not to scale. All dimensions are in millimetres and sizes given are approximate. Where possible, technical MSDS data sheets are made available on the website. All products should be installed and used in accordance with manufacturer's instructions provided. Warning: products may be the subject of registered designs and patents. Refer to website for terms and conditions on warranty.



PRESSURE DROP GRAPH



ITEM SPECIFICATIONS

GST: Excess flow device

VP305-1 DVGW safety device.

It blocks the gas flow automatically, with a trip range from fs min. 1.30 to fs. max 1.45. Pressure drop < 0.5mbar; automatic reset with a flow of 37.5 l/h at 100 mbar (gas).

Threaded connections. Available as a single fitting or, thanks to its compactness, as a device built into the valves does not require maintenance.

For all types of gas in accordance with EN 437 and DWG G260/1 (Methane, Propane and Butane).

Pressure range 15 - 100 mbar.

Working temperature -20°C + 60°C.



T: 1800 225 572 | F: 1800 289 723 | E: sales@systemcontrol.com.au | W: systemcontrol.com.au

In support of our policy of continuous product improvement we reserve the right to change materials and specifications without notice. Drawings, where used, are not to scale. All dimensions are in millimetres and sizes given are approximate. Where possible, technical MSDS data sheets are made available on the website. All products should be installed and used in accordance with manufacturer's instructions provided. Warning: products may be the subject of registered designs and patents. Refer to website for terms and conditions on warranty.

SCE
SYSTEM CONTROL
ENGINEERING