

School Pattern Screw Operated 15mm Cistern Tap with Cover

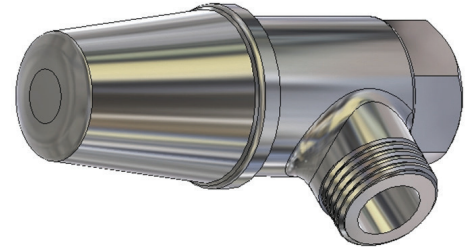
VP358

Enware's vandal resistant School Pattern tapware is constructed from dezincification resistant (DR) brass with durable chrome plating and an easy to clean design.

The handle features a vandal resistant internal locking ring securing it to the spindle and requires a special key to remove. For areas where there is a higher risk of vandalism choose the School Pattern non-removable handle (VPN), which utilises a handle permanently fixed to the spindle.

FEATURES

- High quality construction
- Comprehensive 12-month warranty
- Serviceable with all wearing components replaceable providing a longer life



Product Codes

VP358 Screw Operated 15mm Cistern Tap with cover

Technical Information

Working Pressure Range Ceramic Disc	50-800kPa 500kPa Max (PCA)*
Working Pressure Range Jumper Valve	30-1200kPa 500kPa Max (PCA)*
Maximum Working Temperature*	Ceramic Disc - 85°C
	Jumper Valve - 95°C

*Enware products are to be installed in accordance with the Plumbing Code of Australia and AS/NZS3500.

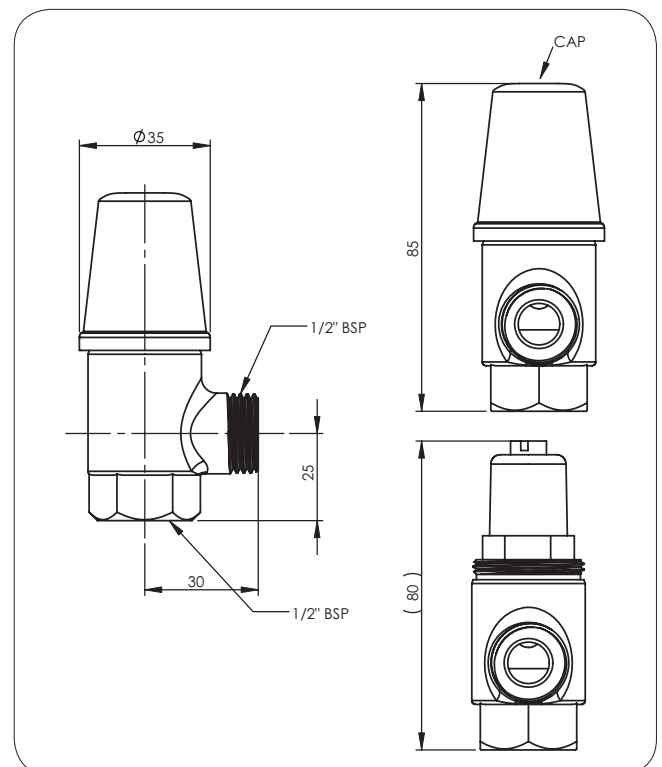
AS/NZS 3500.4 Heated Water Services:

All heated water installations for sanitary fixtures used primarily for personal hygiene purposes shall deliver heated water at a temperature not exceeding:

- 45°C for healthcare and aged care buildings, early childhood centres, primary and secondary schools and nursing homes, or similar facilities for the aged, the sick, children or people with disabilities; and
- 50°C for all other situations (Laundries and kitchen sinks are not required to have heated water at a maximum of 50°C)

NOTE: Enware Australia advises:

1. Due to ongoing Research and Development, specifications may change without notice.
2. Component specifications may change on some export models.



Version: Jan15

Call 1300 369 273
www.enware.com

Enware Australia Pty Limited
9 Endeavour Rd Caringbah NSW 2229 Australia
Ph: 02 8536 4000 Fax: 02 8556 4055

ENWARE
installing confidence