



CEX9 6.6KW - 8.8KW 50°C

Order Code CL1505

"Fully electronically controlled instantaneous water heater, Twin-Temperature-Control TTC® and LCD key control panel for precise hot water supply. Limited to a maximum of 50°C in accordance with AS3498; no tempering valve required.

Manufacturing Code 27900



Water Pressure Min 200kPa - Max 1000kPa

Water Connection 12.7mm BSP

Power Rating MPS® (Multiple Power Setting) 6.6 or 8.8kW 220-240V 50/60 Hz

Dimensions W177mm x D108mm x H294mm

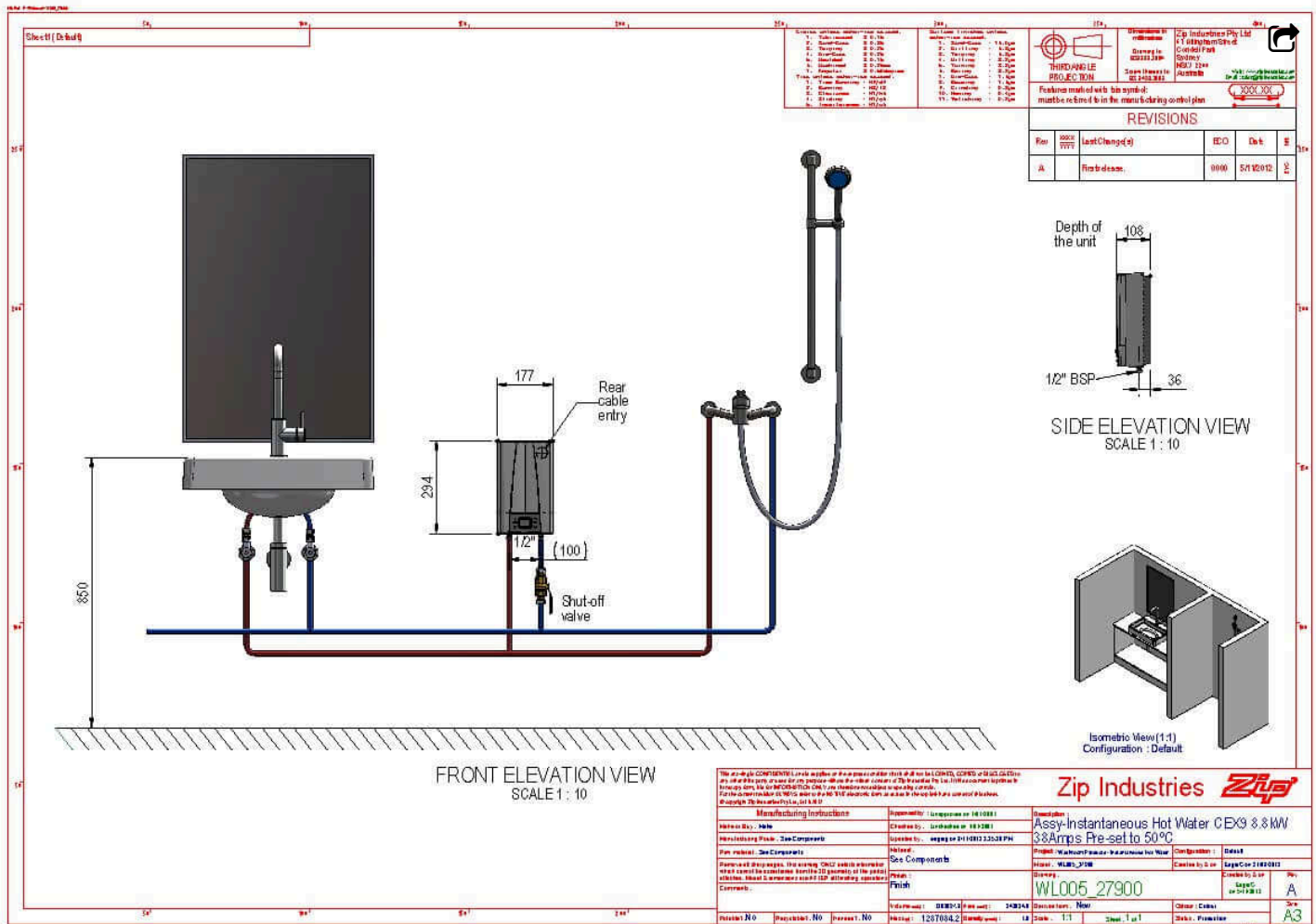
Product Approvals WaterMark, CE,

Warranty Commercial usage 12 months. Residential usage 5 years

Installation Requirements

1. Automatic product selection is no substitute for planning by an expert, please consult with your local Zip representative to ensure the product you have chosen is suitable for its intended application.
2. Instantaneous water heaters require dedicated high Amperage Single or Three phase power supplies, please consult with you electrician or electrical design engineer to ensure you have the correct power supply available for the product you have selected.
3. Must be installed by a suitably qualified person in accordance with manufacturers instructions and with all relevant plumbing and electrical regulations.

Installation Detail



The zip(zip) COMPONENTS Levels apply to the components listed in all zip(zip) CONDUITS, COVERS or SLUG CAPS etc. unless otherwise stated or you refer to the other columns of this manual. The zip(zip) levels are shown in the zip(zip) manual and can be found at the end of the manual.

Manufacturing Instructions		Supplement	Description
Material No.	None	12600000000000	Assy-Instantaneous Hot Water CEX9 8.8kW 3.8Amps Pre-set to 50°C
Manufacturing Phase - See Components	See Components	Created by: LYNCHBURN on 18/03/2018	
Item No.	See Components	Updated by: LYNCHBURN on 23/04/2018 PM	
Form of this document	See Components	Project No.	WATER/PLUMBING/24/000000000000000000
Form of this document	See Components	Revision	WATER_21000
Form of this document	See Components	Material Code	WLO005 27900
Form of this document	See Components	Version	001
Form of this document	See Components	Revision	
Form of this document	See Components	Revision	
Form of this document	See Components	Revision	
Form of this document	See Components	Revision	
Form of this document	See Components	Revision	

Zip Industries

Discussion

Revision NO	Proposed By	Checked By	Date	Status
1.0	LYNCHBURN	LYNCHBURN	18/03/2018	New
1.1	LYNCHBURN	LYNCHBURN	23/04/2018	Change